

BAXI

ECO4S

SPARE PARTS CATALOGUE

- January 2017 -

HOW TO READ THE SPARE PARTS CATALOGUE

In the spare part catalogue, after the exploded diagrams, there are the components lists of the boilers; this is the meaning of the different columns:

Pos. Identification number of the component in the exploded diagram of the boiler.

Description Short description of the component.

Code BAXI S.p.A. code of the component.

Tab. XX XX is the exploded diagram number of the boiler taken into consideration.

From serial number Date (year and week) identifying the beginning of production of a component (taken from the serial number of the boiler).
e.g. 1201: year 2012 (1 identifies the decade 2010-2019; 2 identifies the year) – 01th week.
If the box is empty, the component is in use from the beginning of production of the boiler.

To serial number Date (year and week) identifying the end of production of a component (taken from the serial number of the boiler).
e.g. 1225: year 2012 (1 identifies the decade 2010-2019; 2 identifies the year) – 25th week.
If the box is empty, the component is still in use.

Interchangeable It identifies the interchangeability between the new component and the old one.
YES: components are interchangeable.
NO: components are not interchangeable.

TABELLA COLLEGAMENTO CODICE CALDAIA - ESPLOSO TABLEAU CONNECTION CODEX CHAUDIERE - VUE ECLATEE BOILERS CONNECTION BOARD - EXPLODED VIEW

BOILER CODE	BOILER DESCRIPTION	EXPLODED REF.
CODICE CALDAIA	DESCRIZIONE CALDAIA	RIF. ESPLOSO
CODIGO CALDERA	DESCRIPCION CALDERA	REF. EXPLOSIONADO
CODE CHAUDIERE	DESCRIPTION CHAUDIERE	RÉF. EXPLOSÉE
765966601	ECO4S 1.24 F	Tab 623
765966801	ECO4S 10 F	Tab 621
765966901	ECO4S 18 F	Tab 621
765976201/2	ECO4S 24	Tab 622
765967001/2	ECO4S 24 F	Tab 621

ECO4S

02/01/2017

Pos	Code	Description code	765976201/2	1.24 F	765966601	765966801	18 F	765966901	24 F	76597001/2	To serial number	From serial number	Interchangeable:
			24		10 F								
2	5698660	LEFT PANEL ASSEMBLY ECO4 ATM.	•										
2	766071100	LEFT PANEL ASSEMBLY ECO4 FF		•	•	•	•	•					
3	5698650	RIGHT PANEL ASSEMBLY ECO4 ATM.	•										
3	766070900	RIGHT PANEL ASSEMBLY ECO4 FF		•	•	•	•	•					
4	766404400	FRONTAL PANEL	•										
4	766404500	FRONTAL PANEL		•	•	•	•	•					
5	5117420	TRAVERSE SIDES CONNECTION FF		•	•	•	•	•					
5	5117460	TRAVERSE SIDES CONNECTION-ATM-	•										
8	5408080	PRESSURE SWITCH PIPE L=270		•	•	•	•	•					
9	5115860	FLUE RESTRICTOR D.60/43		•	•	•	•	•					
12	5108690	PLATE BLANKING		•	•	•	•	•					
13	5407400	SUCTION CAP GASKET		•	•	•	•	•					
17	5214290	BEND FLUE EMISSIONS ECO4		•	•	•	•	•					
18	5413850	PRESS.SENS.VENTURI SINGLE TAP		•	•	•	•	•					
21	5402050	WASHER-SEALING	•	•	•	•	•	•					
22	5682150	FAN		•	•	•	•	•					
23	628610	PRESS.SWITCH ASS. 0,68mbar HONEYW		•	•	•	•	•					
23	721890300	FLUE PRESS.SWITCH 70-60Pa HUBA		•	•	•	•	•					
24	5414320	PIPE-VALVE COMPENS.4,5x8 L=170		•	•	•	•	•					
25	5118150	CONVEYOR ASSEMBLY ECO4 225mm		•	•	•	•	•					
27	5698630	COMBUST. CHAMBER ASS. ECO4 ATM	•										
27	5700940	COMB. CHAMBER ASS. ECO4 225		•	•	•	•	•					
28	5213210	INSULATING PANEL		•	•	•	•	•					
28	5213220	INSULATING PANEL	•										
29	5213280	INSULATING PANEL	•										
29	5214630	INSULATING REAR PANEL FF 225		•	•	•	•	•					
30	5213380	FRONTAL INSULATING PANEL	•										
30	5214700	INSUL.FRONT.PANEL ECO4 FF 225		•	•	•	•	•					
31	615370	COMBUST.CHAMBER FRONTAL PANEL	•										
31	5700980	COMB.CH.FRONT.PANEL ECO4 FF 225		•	•	•	•	•					
32	5677660	PRIMARY EXCHANGER WITH CLIPS	•										
32	5700950	HEAT EXCHANG. H2O/GAS ECO4 225		•	•	•	•	•					
33	710963000	OR 21,5X3 EP70 TFL	•	•	•	•	•	•					
34	5113650	PRIMARY EXCHANGER FIXING CLIP	•	•	•	•	•	•					
35	5693900	RECT.EXPANSION VESSEL 6I-CIMM-	•										
35	5693920	CIRC.EXPANS.VESSEL 6I CIMM		•	•	•	•	•					
36	5698830	PIPE EXPANSION VESSEL	•										
36	710054000	EXPANSION VASSEL PIPE		•	•	•	•	•					
37	5663830	SEALED CHAMBER FRONT PANEL		•	•	•	•	•					
38	5401610	VIEWING WINDOW GASKET		•	•	•	•	•					
39	5203930	VIEWING WINDOW		•	•	•	•	•					

ECO4S

02/01/2017

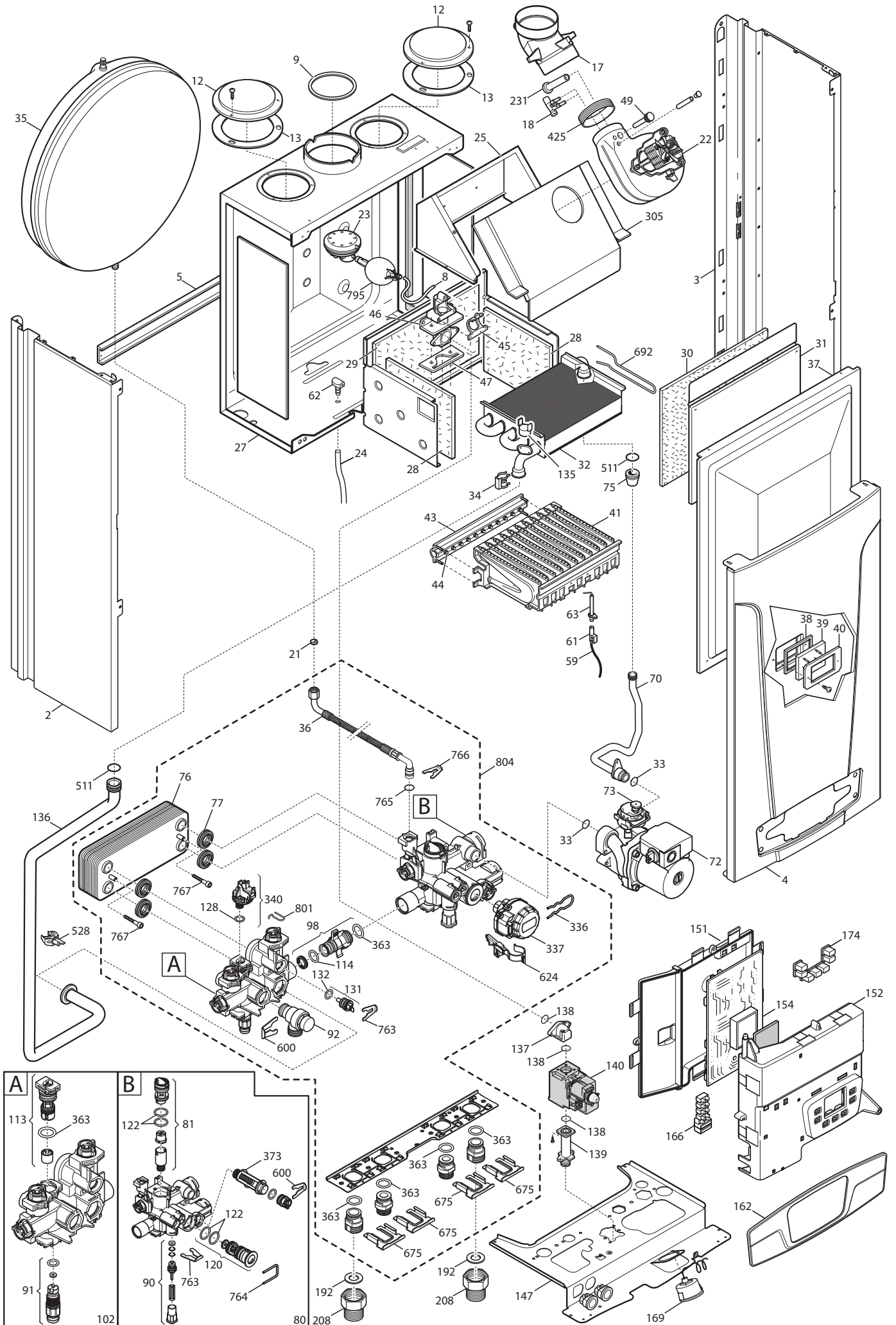
Pos	Code	Description code	765976201/2 24	765966601 1,24 F	765966801 10 F	765966901 18 F	765967001/2 24 F	To serial number	From serial number	Interchangeable:
40	5103360	SURROUND - VIEWING WINDOW		•	•	•	•			
41	5663710	BURNER ASSEMBLY (13 ELEM.)	•							
41	5700530	BURNER ASSEMBLY 11 ELEMENTS		•	•	•	•			
43	5698690	GAS RAMP 13HOLES/INJECT. d1,18	•							
43	5700500	GAS RAMP 11 HOLES/INJECT d.1,35		•	•	•	•			
44	5669460	NATURAL GAS INJECTORS KIT	•							
44	5680020	TRANSFORMATION KIT G31	•							
44	5704730	KIT TRANSF.GAS G31 11x0,85		•	•	•	•			
44	5705280	KIT TRANSF.GAS G20 11x1,35		•	•	•	•			
45	5407940	GASKET-BURNER MANIFOLD	•	•	•	•	•			
46	5657180	ADAPTOR-MANIFOLD	•	•	•	•	•			
47	5407810	GASKET-MANIFOLD ADAPTOR		•	•	•	•			
49	5409520	HOSE ADAPTER CAP		•	•	•	•			
59	710430800	IGNITION CABLE L=250 RESIST.	•	•	•	•	•			
61	5407830	INSULATION BOOT - ELECTRODE	•	•	•	•	•			
62	5409570	SEALED CHAMBER HOSE ADAPTER		•	•	•	•			
63	8422570	ELECTRODE - IGNITION	•	•	•	•	•			
70	5698720	PIPE PUMP/EXCHANGER ATM BITRON	•							
70	5700960	PIPE PUMP/EXCHANGER ECO4 225		•	•	•	•			
72	766070700	PUMP GR. 1SPEED 5M	•	•	•	•	•			
73	710493600	AIR VENT PUMP GR.	•	•	•	•	•			
75	5404670	GROMMET - PIPE ASSEMBLY		•	•	•	•			
76	5686660	DHW PLATE EXCHANGER 10 PLATES	•		•	•	•			
77	5404520	DHW PLATE EXCHANGER GASKET	•		•	•	•			
80	711033700	COMBI HYDROBLOCK RETURN BIT. ECO	•		•	•	•			
81	710048100	DHW CARTRIDGE	•		•	•	•			
90	710046600	FILLING TAP ASSY	•	•	•	•	•	1639		
90	766947000	FILLING TAP ASSY	•	•	•	•	•		1640	YES
91	710045500	DISCHARGE TAP CONNECTION	•	•	•	•	•			
92	710071200	SAFETY VALVE 3 bar NOVASFER	•	•	•	•	•			
98	710046300	BY-PASS CONNECTION ASSY	•	•	•	•	•			
102	711033600	COMBI HYDROBLOCK DELIVERY BIT. EC	•		•	•	•			
113	710048300	BY-PASS CARTRIDGE	•	•	•	•	•			
114	710046400	O-RING d.15,54X2,62	•	•	•	•	•			
120	721403800	3WV CARTRIDGE	•		•	•	•			
122	710047800	O-RING d.23,47X2,62	•		•	•	•			
128	710048800	O-RING d.8,9X1,9	•	•	•	•	•			
131	721309400	NTC SENSOR NICKEL	•		•	•	•			
132	710049100	O-RING d.11,91X2,62 OR115	•		•	•	•			
135	9950760	THERMOSTAT - LIMIT		•	•	•	•			
135	9951610	LIMIT THERMOSTAT 105°C	•							
136	5698740	PIPE EXCH./H.INLET ECO4 ATM	•							

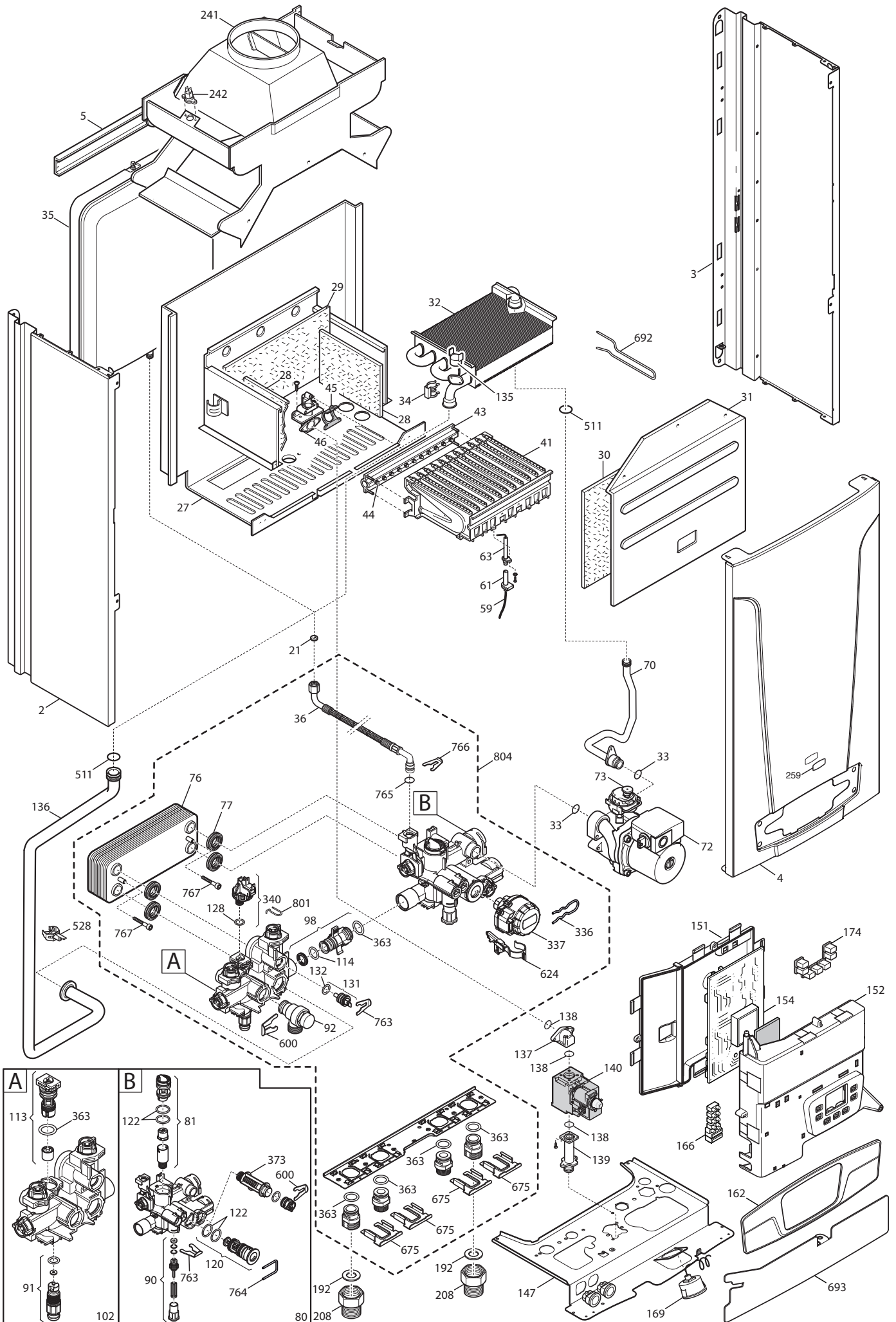
Pos	Code	Description code	765976201/2	765966601	765966801	765966901	765967001/2	To serial number	From serial number	Interchangeable:
			24	1.24 F	10 F	18 F	24 F			
136	5700970	PIPE EXCHANG./H.INLET ECO4 225		•	•	•	•			
137	5214270	GAS V. ELBOW OUTLET OPEN FLUE	•							
137	5214280	GAS VALVE ELBOW OUTLET FF		•	•	•	•			
138	5402010	O RING 22.22x2.62	•	•	•	•	•			
139	5206620	CONNECTOR-GAS VALVE INLET	•	•	•	•	•			
140	5665220	GAS VALVE HON.	•	•	•	•	•			
147	5698770	CONNECTION TRAVERSE ECO4	•	•	•	•	•			
151	631660	CONTROL PANEL COVER ECO4	•	•	•	•	•			
152	5698880	CONTROL PANEL ECO4 BAXI	•	•	•	•	•			
154	5702450	PCB GROUP BERT&PART HDIMS 02	•	•	•	•	•			
162	766404300	PANEL PLATE	•	•	•	•	•			
166	5688430	TERM.BOARD/DOUBLE FUSE HOLDER	•	•	•	•	•			
169	8922460	MANOMETER d.40 XGR. BITRON	•	•	•	•	•			
174	710830500	KEYBOARD MAIN5/ECO5	•	•	•	•	•			
192	5404650	SEALING WASHER G 3/4	•	•	•	•	•			
208	710635700	CONNECTING ELEMENT M/F G3/4	•	•	•	•	•			
231	5409480	FLUE INTAKE		•	•	•	•			
241	5668420	CONVEYOR ASSEMBLY	•							
242	616160	FLUE SAFETY THERMOSTAT 70ø	•							
259	5681120	BRAND BAXI LUNA3	•	•	•	•	•			
305	5118210	FAN BRACKET ECO4 225		•	•	•	•			
336	710047400	CLIP - 3WV MOTOR HEAD	•		•	•	•			
337	710047300	3WV MOTOR HEAD	•		•	•	•			
340	721384000	ON/OFF CH PRESSURE SWITCH	•	•	•	•	•			
363	710045300	O-RING d.17,96X2,62	•	•	•	•	•			
373	710047100	CH FILTER	•	•	•	•	•			
425	5412270	GASKET FAN		•	•	•	•			
511	5404600	O.R. 17,86x2,62	•	•	•	•	•			
528	8435500	NTC SENSOR D18-ITS2410201/0-	•	•	•	•	•			
600	710045400	CLIP FLAT d.18	•	•	•	•	•			
624	710976600	HALL SENSOR ASSY	•		•	•	•			
675	710046100	CLIP BRASS ADAPTOR	•	•	•	•	•			
692	5114360	PRIMARY EXCHANGER CLIPS	•	•	•	•	•			
693	710471300	PRINTED CNTR. PANEL PROTECTION	•							
763	710046700	CLIP FLAT d.12	•	•	•	•	•			
764	710047500	CLIP U d.3	•		•	•	•			
765	710045700	O-RING d.9,19 X 2,62	•	•	•	•	•			
766	5118110	FLAT SPRING diameter 10	•	•	•	•	•			
767	710046900	PTP EXCH FIXING SCREW	•		•	•	•			
795	710447300	CONDENSATE TRAP		•	•	•	•			
801	710048700	CLIP CH PRESSURE SWITCH	•	•	•	•	•			
804	5698760	HYDRAULIC GROUP COMBI BITRON	•		•	•	•			

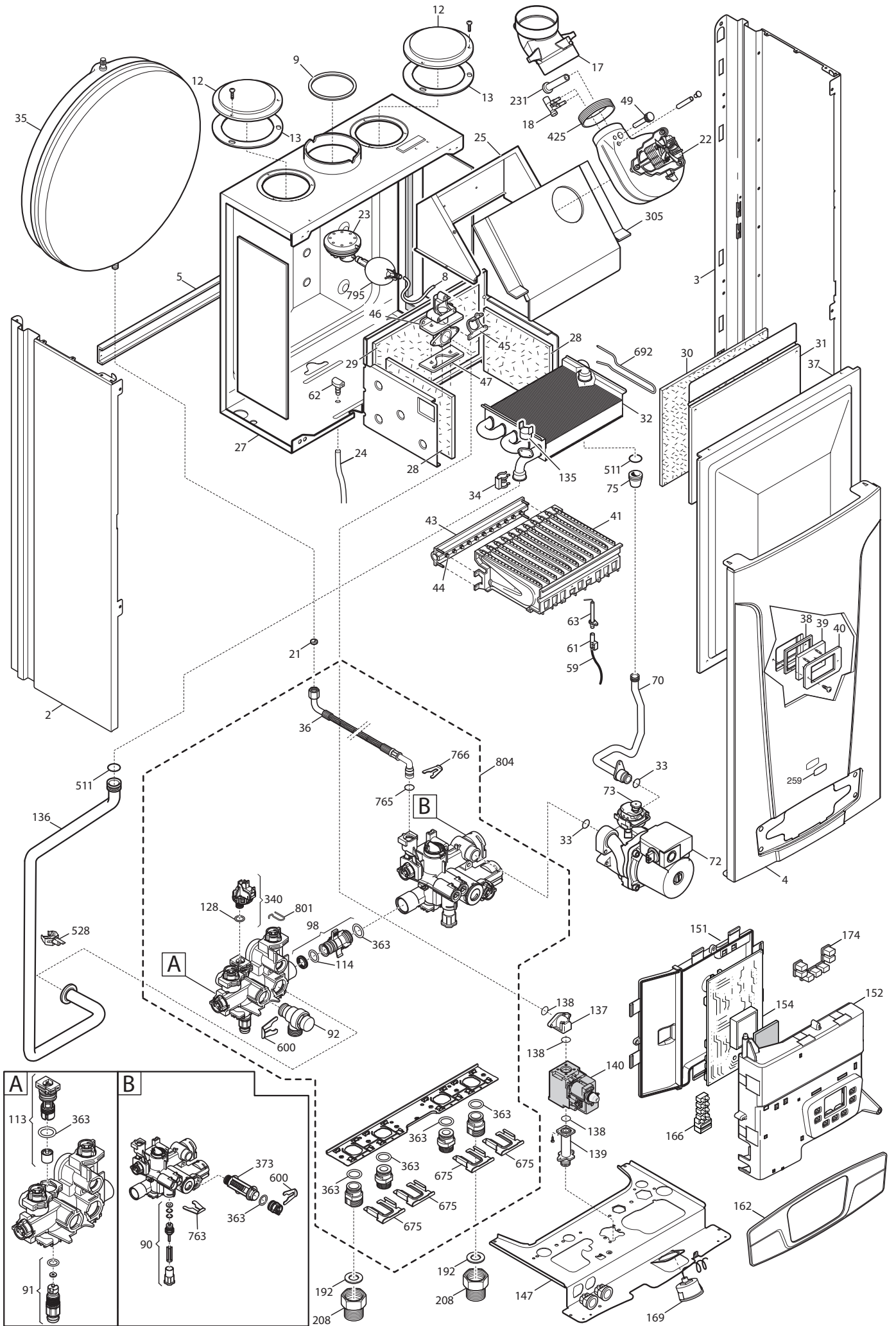
ECO4S

02/01/2017

Pos	Code	Description code	765976201/2	1.24 F	765966601	10 F	765966801	18 F	765966901	24 F	765967001/2	To serial number	From serial number	Interchangeable:
			24											
804	5699200	HYDRAULIC GROUP ONLY HEATING		•										
999	8414540	CABLE ROOM TH	•	•	•	•	•							
999	8414620	POWER CABLE	•	•	•	•	•							
999	8419040	CABLE - EARTH	•	•	•	•	•							
999	8513650	LOW VOLTAGE WIRING ECO4 ATM	•											
999	8513660	FAN WIRING ECO4		•	•	•	•							
999	8513670	LOW VOLTAGE WIRING ECO4 FF		•	•	•	•							
999	8513910	LOW VOLTAGE WIRING ECO4 BITRON			•	•	•							
999	8513950	LOW VOLT.WIRING ECO4 MONOTHER.		•										
999	766404100	HIGH VOLTAGE WIRING		•										
999	766404200	HIGH VOLTAGE WIRING	•		•	•	•							







BAXI

**BAXI S.p.A.
Via Trozzetti, 20
36061 BASSANO DEL GRAPPA (VI)
ITALY
Tel. +390424517111
Telefax +390424517379
E-mail. service@baxi.it**