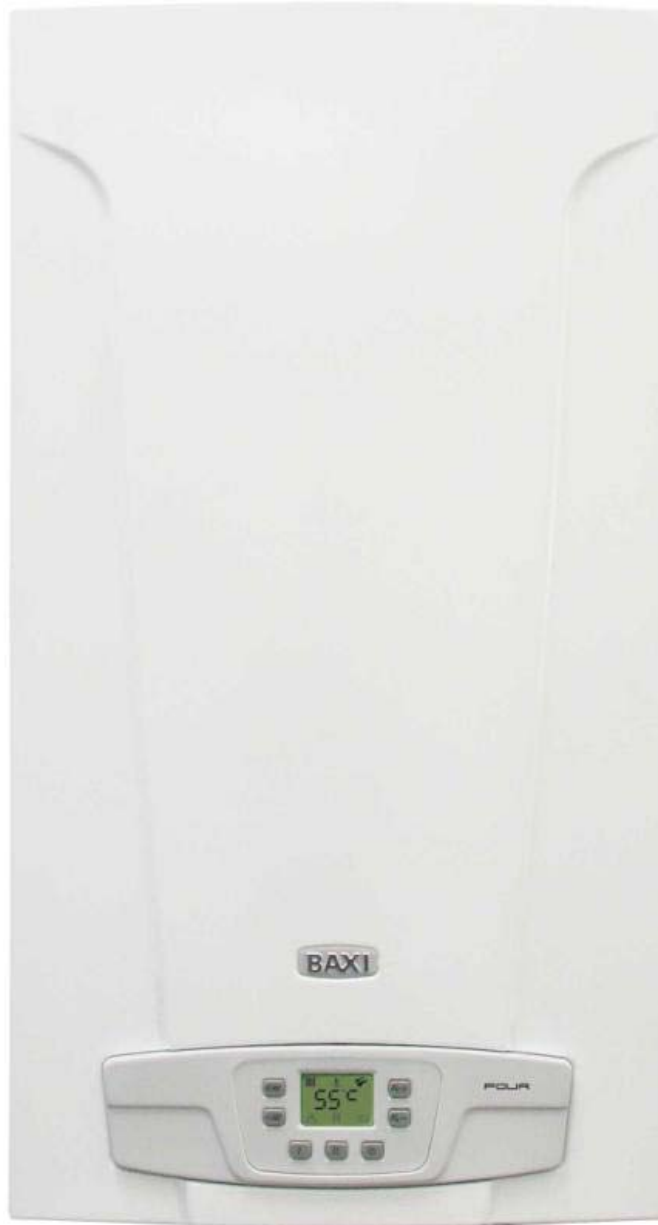


**BAXI**



**MAINFOUR**

**SPARE PARTS CATALOGUE**

**- September 2009 -**



# HOW TO READ THE SPARE PARTS CATALOGUE

In the spare part catalogue, after the exploded diagrams, there are the components lists of the boilers; this is the meaning of the different columns:

Pos.	Identification number of the component in the exploded diagram of the boiler.
Description	Short description of the component.
Code	BAXI S.p.A. code of the component.
Tab. XX	XX is the exploded diagram number of the boiler taken into consideration.
From serial number	Date (year and week) identifying the beginning of production of a component (taken from the serial number of the boiler). e.g. B005: year 2000 (B identifies the decade 2000-2009; 0 identifies the year) – 5th week. If the box is empty, the component is in use from the beginning of production of the boiler.
To serial number	Date (year and week) identifying the end of production of a component (taken from the serial number of the boiler). e.g. B012: year 2000 (B identifies the decade 2000-2009; 0 identifies the year) – 12th week. If the box is empty, the component is still in use.
Interchangeable	It identifies the interchangeability between the new component and the old one. YES: components are interchangeable. NO: components are not interchangeable.

## BOILERS CONNECTION BOARD - EXPLODED VIEW

## TABELLA COLLEGAMENTO CODICE CALDAIA - ESPLOSO

## TABLERO UNIÓN CALDERA - EXPLOSIONADO

## TABLEAU CONNECTION CODEX CHAUDIERE - VUE ECLATEE

<b>BOILER CODE</b>	<b>BOILER DESCRIPTION</b>	<b>EXPLODED REF.</b>
<b>CODICE CALDAIA</b>	<b>DESCRIZIONE CALDAIA</b>	<b>RIF. ESPLOSO</b>
<b>CODIGO CALDERA</b>	<b>DESCRIPCION CALDERA</b>	<b>REF. EXPLOSIONADO</b>
<b>CODE CHAUDIÈRE</b>	<b>DESCRIPTION CHAUDIÈRE</b>	<b>RÉF. EXPLOSÉE</b>
BSB462243650	MAINFOUR 24	Tab 378
BSB466243650	MAINFOUR 24 F	Tab 377
BSE466243650	MAINFOUR 240 F	Tab 381

# MAINFOUR

Pos	Code	Description code				To serial number	From serial number	Interchan geable:
			BSR46243650 24 F	BSR46243650 24 F	BSE46243650 240 F			
2	5698660	LEFT PANEL ASSEMBLY ECO4 ATM.	•					
2	5698680	LEFT PANEL ASSEMBLY ECO4 FF		•	•			
3	5698650	RIGHT PANEL ASSEMBLY ECO4 ATM.	•					
3	5698670	RIGHT PANEL ASSEMBLY ECO4 FF		•	•			
4	628820	FRONTAL PANEL ASS. ECO4 ATM	•					
4	5117890	FRONTAL PANEL ECO4 BAXI		•	•			
5	5117420	TRAVERSE SIDES CONNECTION FF		•	•			
5	5117460	TRAVERSE SIDES CONNECTION-ATM-	•					
8	5408080	PRESSURE SWITCH PIPE L=270		•	•			
9	5115860	RESTRICTOR AIR INTAKE D60/43		•				
9	5117740	FLUE REDUCTION d.78mm			•			
12	5108690	PLATE BLANKING		•	•			
13	5407400	SUCTION CAP GASKET		•	•			
17	5214290	BEND FLUE EMISSIONS ECO4		•	•			
18	5413850	PRESS.SENS.VENTURI SINGLE TAP		•	•			
21	5402050	WASHER-SEALING	•	•	•			
22	5682150	FAN		•	•			
23	628720	FLUE PRESS.SWITCH 0,68 mbar		•	•			
24	5407930	PIPE - VALVE COMPENSATION		•	•			
25	5113800	CONVEYOR ASSEMBLY			•			
25	5118150	CONVEYOR ASSEMBLY ECO4 225mm		•				
27	5668290	COMBUSTION CHAMBER ASSEMBLY	•					
27	5700480	COMBUSTION CHAMBER ASSY 225mm		•				
27	5703330	COMB. CHAMBER ASS.MAIN4 270			•			
28	5213210	INSULATING PANEL		•	•			
28	5213220	INSULATING PANEL	•					
29	5213280	INSULATING PANEL	•		•			
29	5214630	INSULATING REAR PANEL FF 225		•				
30	5213370	INSULATING PANEL			•			
30	5213380	FRONTAL INSULATING PANEL	•					
30	5214680	INSULATING FRONTAL PANEL FF225		•				
31	612970	COMB. CHAMBER FRONTAL PANEL			•			
31	5114290	COMB. CHAMBER FRONTAL PANEL	•					
31	5700540	COMB.CHAMB.FRONTAL PANEL FF225		•				
32	616170	BI-THERMAL HEAT EXCHANGER+ OR	•		•			
32	5700520	HEAT EXCH.H2O/GAS 225mm VALMEX		•				
33	5403130	O-RING 22 x 3	•	•	•			
34	5113650	PRIMARY EXCHANGER FIXING CLIP	•	•	•			
35	5693900	RECT.EXPANSION VESSEL 6I-CIMM-	•					
35	5695230	CIRC.EXPANS.VESSEL 6I ZILMET		•	•			
36	5698830	PIPE EXPANSION VESSEL	•	•	•			
37	5663830	SEALED CHAMBER FRONT PANEL		•	•			
38	5401610	VIEWING WINDOW GASKET		•	•			

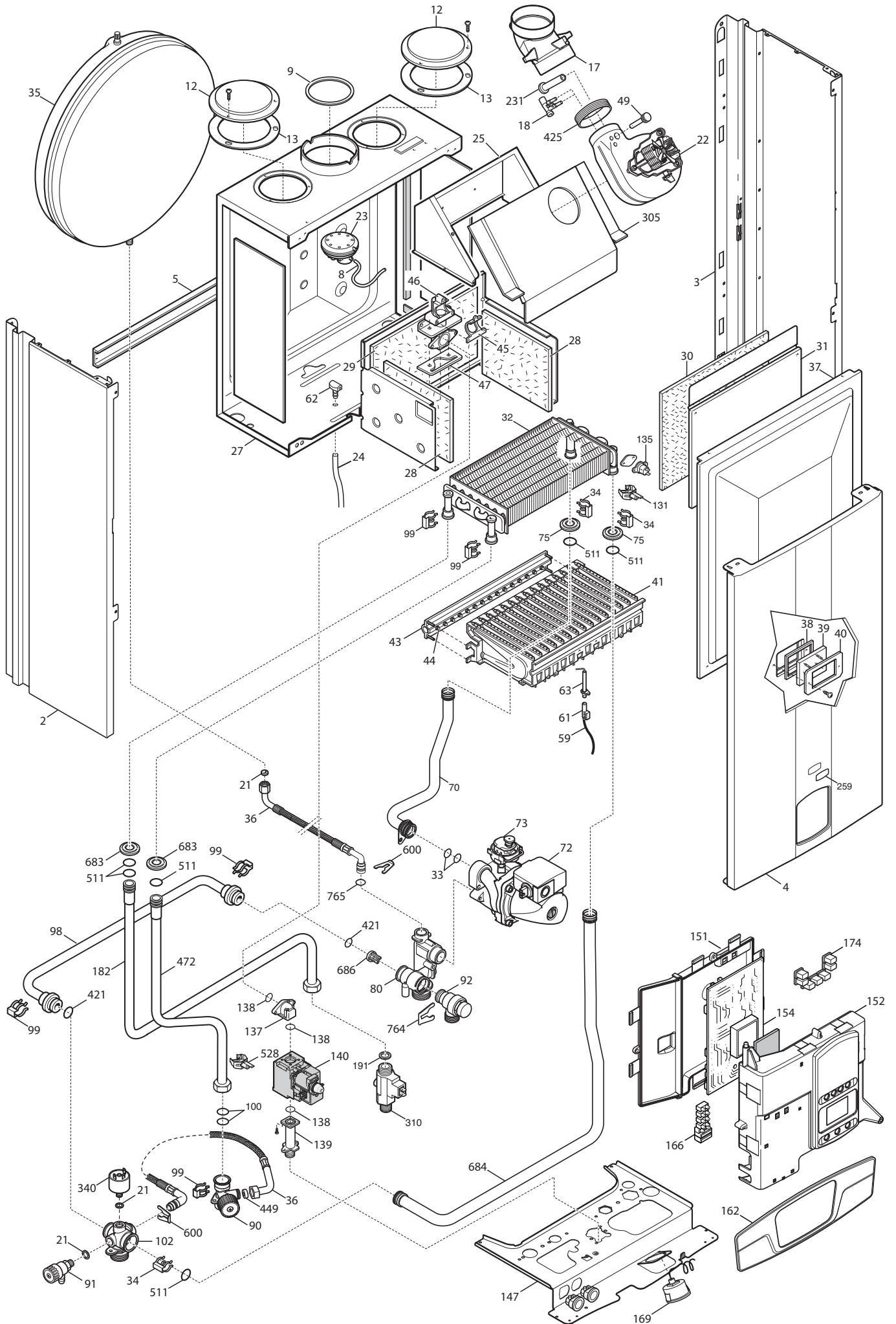
# MAINFOUR

Pos	Code	Description code				To serial number	From serial number	Interchan geable:
			BSB462243650 24	BSB46243650 24 F	BSF46243650 240 F			
39	5203930	VIEWING WINDOW		•	•			
40	5115590	SURROUND-SIGHT GLASS		•	•			
41	5663710	BURNER ASSEMBLY (13 ELEM.)	•		•			
41	5700530	BURNER ASSEMBLY 11 ELEMENTS		•				
43	612960	GAS RAMP WITH INJECTORS (N.G.			•			
43	5698690	GAS RAMP 13HOLES/INJECT. d1,18	•					
43	5700500	GAS RAMP 11 HOLES/INJECT d.1,35		•				
44	5210780	INJECTOR D. 0,77 (LPG)			•			
44	5210790	INJECTOR (1x0,85) LPG		•				
44	5214470	INJECTOR diameter 1,35 mm		•				
44	5666390	L.P.G. INJECTORS KIT	•					
44	5666400	NATURAL GAS INJECTORS KIT			•			
44	5669460	NATURAL GAS INJECTORS KIT	•					
45	5407940	GASKET-BURNER MANIFOLD	•	•	•			
46	5657180	ADAPTOR-MANIFOLD	•	•	•			
47	5407810	GASKET-MANIFOLD ADAPTOR		•	•			
49	5409520	HOSE ADAPTER CAP		•	•			
59	8612400	IGNITION CABLE L=250 ECO4	•	•	•			
61	5407830	INSULATION BOOT - ELECTRODE	•	•	•			
62	5409570	SEALED CHAMBER HOSE ADAPTER		•	•			
63	8422570	ELECTRODE - IGNITION	•	•	•			
70	5700340	ASS.PIPE PUMP/EXCHANGER	•					
70	5700550	PIPE ASS.PUMP/EXCH.MAIN4 FF225		•				
70	5703340	PIPE PUMP/EXCH.MAIN4 FF 270			•			
72	5698260	PUMP ONE SPEED 5meters WILO	•	•	•			
73	710139500	AUTOMATIC AIR VENT	•	•	•			
75	5404670	GROMMET - PIPE ASSEMBLY		•	•			
80	5214590	HYDRAULIC INLET GROUP/PUMP	•	•	•			
90	5700370	CONNECTION CH OUTLET/FILLING	•	•	•			
91	5652030	DRAINING TAP	•	•	•			
92	710071200	SAFETY VALVE 3 bar NOVASFER	•	•	•			
98	5214610	BY-PASS PIPE MAIN 4	•	•	•			
99	8380850	FIXING CLIP	•	•	•			
100	5406630	O-RING	•	•	•			
102	5214600	GROUP HEATING INLET MAIN 4	•	•	•			
131	8435400	NTC SENSOR	•		•			
131	8435510	NTC SENSOR d.14		•				
132	5402830	WASHER - SENSOR SEALING	•		•			
135	9950760	THERMOSTAT - LIMIT	•	•	•			
137	5702350	PIPE GAS MAIN 4 ATM	•					
137	5702360	PIPE GAS MAIN 4 FF		•	•			
140	5702340	GAS VALVE VK4105G M-M G3/4	•	•	•			



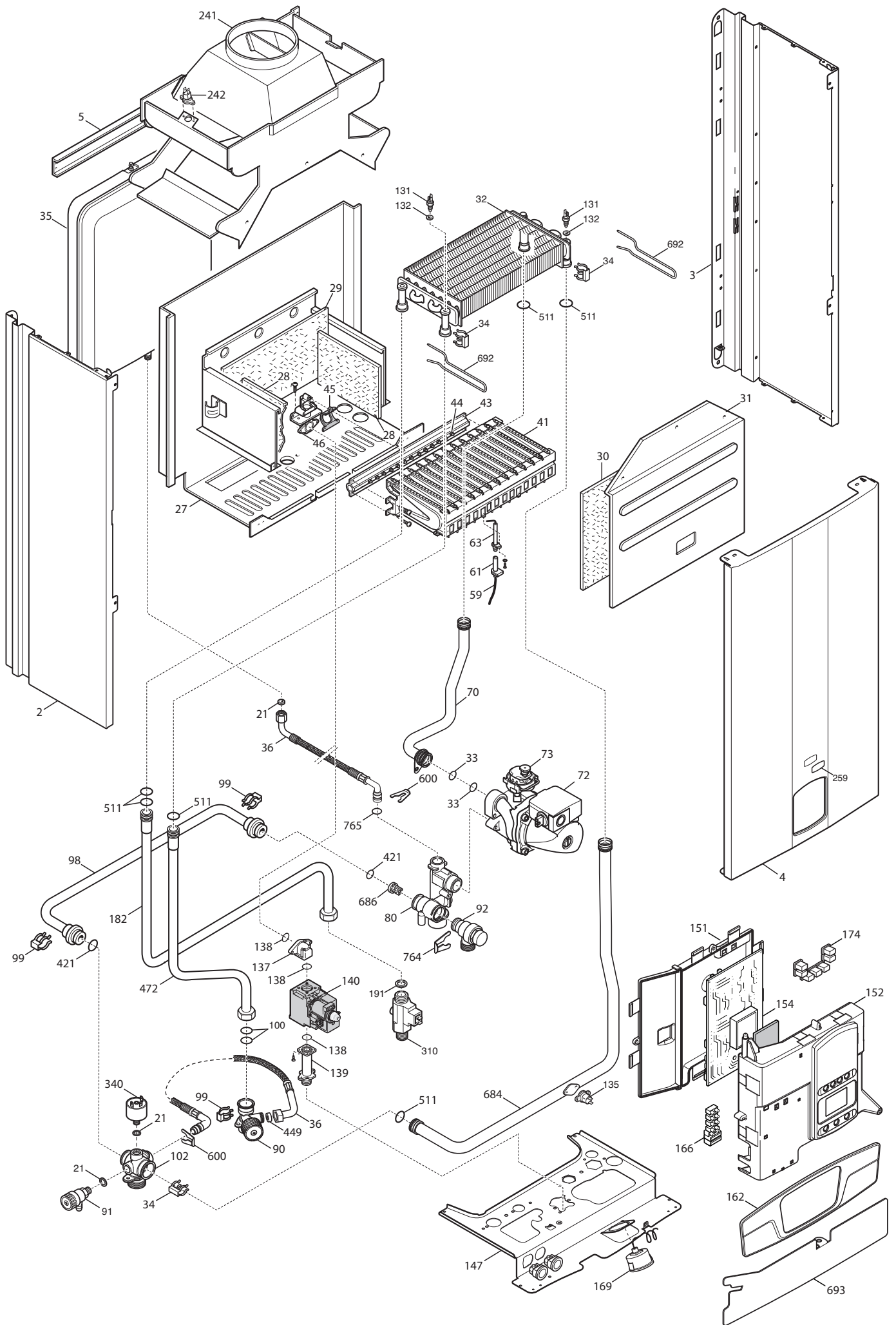


# Tab 377

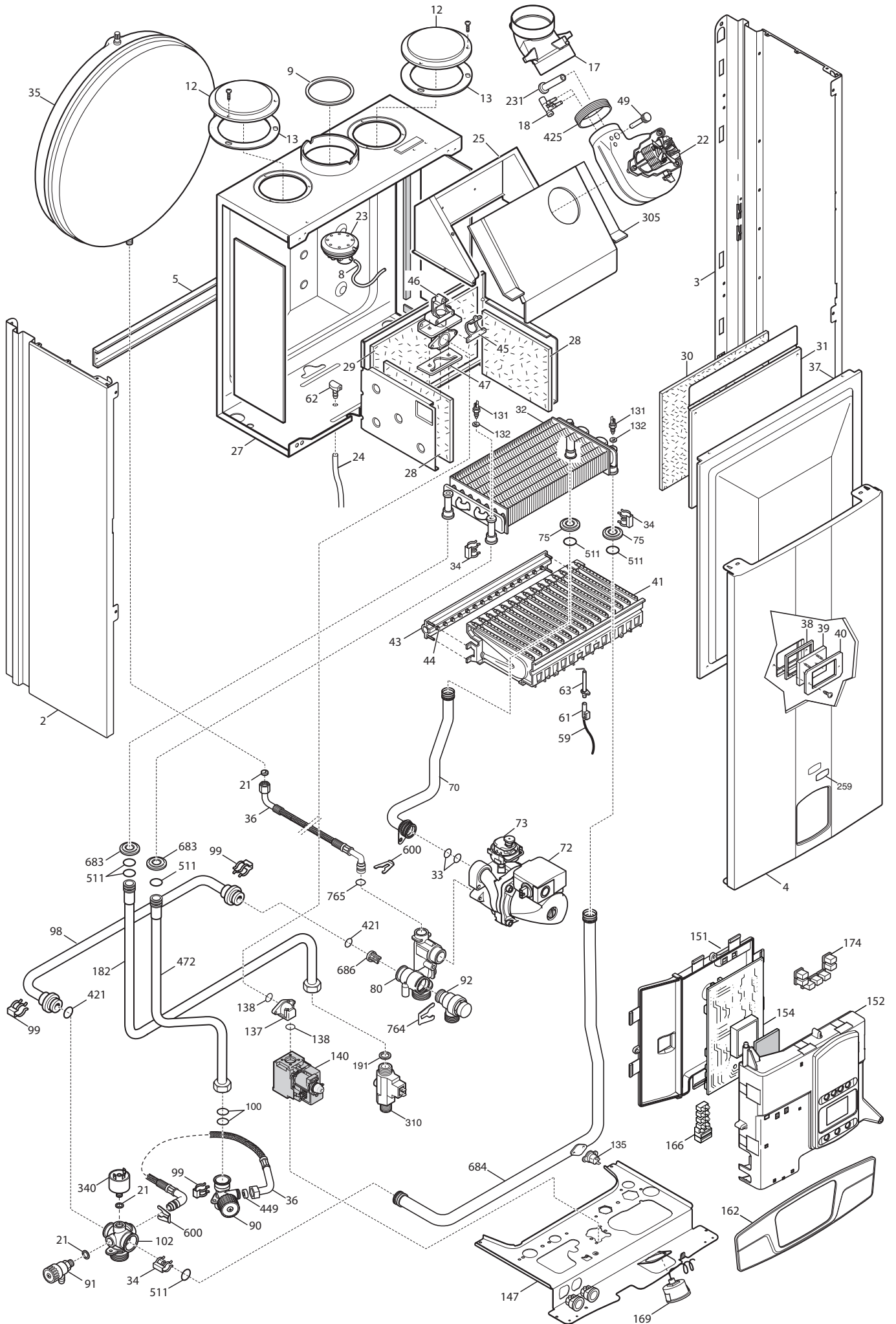




# Tab 378



# Tab 381





# **BAXI**

**BAXI S.p.A.**  
**Via Trozzetti, 20**  
**36061 BASSANO DEL GRAPPA (VI)**  
**ITALY**  
**Tel. +390424517111**  
**Telefax +390424517379**  
**E-mail. [service@baxi.it](mailto:service@baxi.it)**